

# *Flemington*

## *Apartments*



*Northeast Corner North Broadway  
and East John Street at  
Head of Olive Way  
Seattle*



*A Brief Description*  
OF  
THE FLEMINGTON  
APARTMENTS

"SEATTLE'S BEST APARTMENTS"



LOCATED AT 906 EAST JOHN  
HEAD OF OLIVE WAY  
SEATTLE, WASHINGTON  
Phone Capitol 0055



## The Flemington Apartments

The Flemington Apartments are ideally situated, not only for the present, but for the future, occupying as they do, the Northeast corner of Broadway and East John Street, at the head of Olive Way. The location is close to both the wholesale and retail shopping districts, and justifies the erection of a first-class building. In addition to convenience, there is a wonderful view of the City and Puget Sound. These two features make the Flemington a very attractive place in which to live.

The building is solid brick construction faced with Clayburn brick and beautifully trimmed with terra-cotta. The main entrance and first floor stairway are of solid Tokeen marble. The hallways, corridors and stairways are laid with Bundhar Wilton carpet and padded with very heavy hair padding.



## LIVING ROOMS

The living and dining rooms are all bright cheery rooms, being papered with a high grade paper that will harmonize with all furniture and drapes. The floors in the living and dining rooms, halls and corridors are perfectly matched quarter sawed, clear, white oak. Good oak



floors are always beautiful, they have well been called, "Nature's gift of everlasting beauty." Windows make or mar a room. The brightness of these rooms is due in a great measure, to the large windows. These windows are of the leaded glass type with the advantage of being more



easily cleaned. Every window in the building is insulated with Chamberlain Weather Metal Striping. This insures against dust, drafts or rattling of windows. The window shades are light ivory and curtain and drape fixtures are installed, which will not discolor or rust. There are three electric outlets in each room.

## KITCHEN

The Flemington Kitchen is an achievement and is the last word in sanitary equipment, convenience and beauty. The floors are solid marble and the walls and ceilings are enameled. Westinghouse



automatic electric ranges are installed in each and are too well known to require comment. Ample cupboard space is supplied. All cupboards have

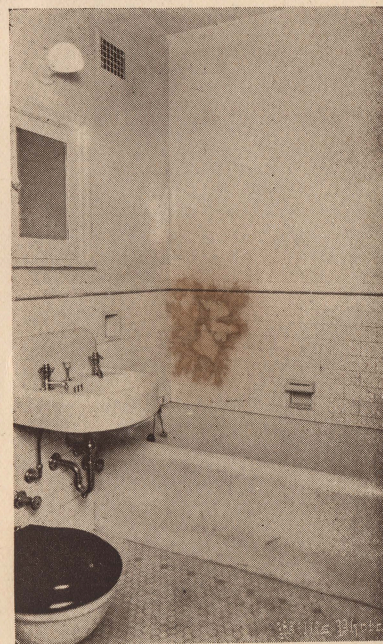


a sanitary base. Besides having excellent coolers, cork lined refrigerators of the best quality are furnished.

The disappearing tables are beautiful quarter sawed oak; instead of the usual awkward benches, the owner has provided solid oak dining chairs. The integral drain-board sinks of white enamel are installed under the window, and have an anti-splash faucet, with china soap dishes that are detachable. This wonderful kitchen will charm the most fastidious woman, it is a room that any one will take pride and pleasure in.

### BATH ROOM.

All bath-rooms have tile floors and tile wainscoting. The tubs are Pembroke pattern and the built-in idea has been extended to the soap dishes,



paper holders and tooth brush holders. There is also a large size medicine cabinet with a bevel plate mirror, and a plate glass shaving shelf. Those who see the Flemington Bathroom usually remark, "What beautiful fixtures."





*Flemington Apartments*

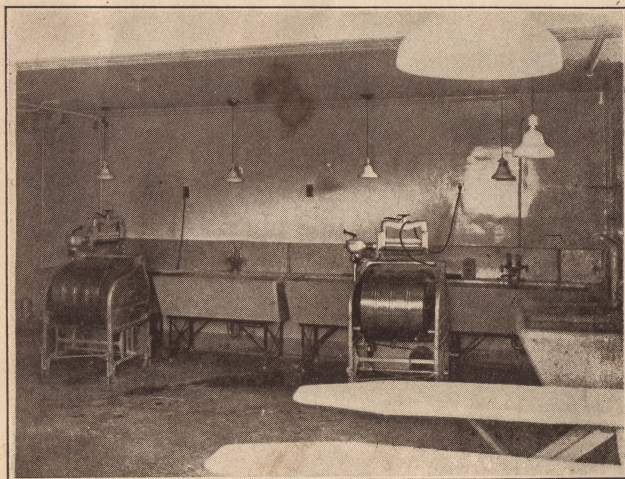


### DRESSING ROOMS.

The dressing rooms are very large and have plenty of space for hanging clothes. The walls are painted so garments are secure against the annoyance of calsumine or plaster. A full length French bevel plate mirror is provided in each apartment.

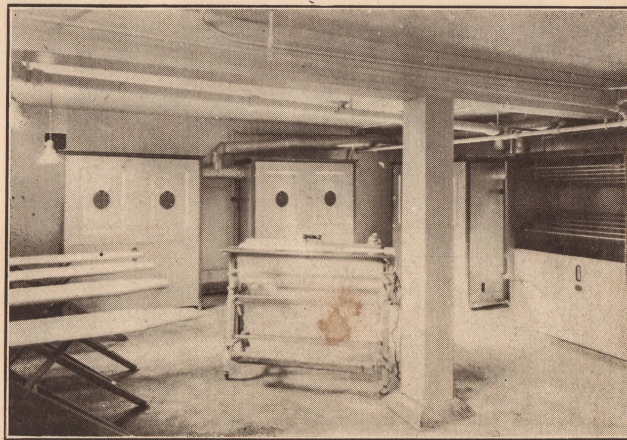
### LAUNDRY ROOM.

The laundry room is large, well lighted and ventilated and is equipped with the most modern



electric appliances. The foremost electric washing machines, and electric ironing machine that will

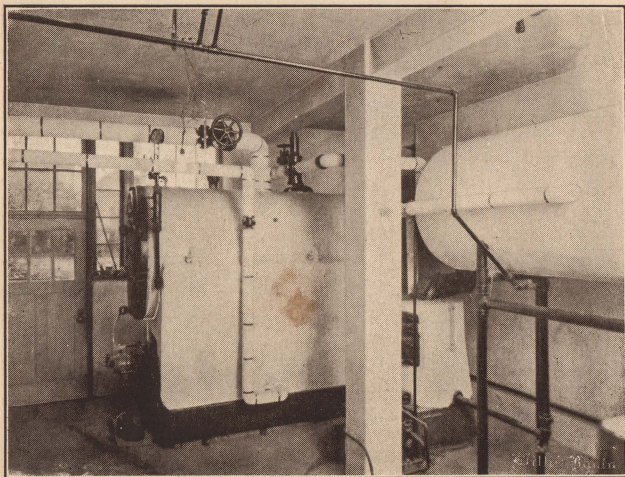
iron the finest fabrics, and electric driers make this an exceptional laundry. This equipment is for the tenants' convenience and is provided for them without extra charge.





### HEATING PLANT

The heating plant in the Flemington is consistent with everything else in the building. It has proved its efficiency in heating the building in the most satisfactory manner.



In December, 1924, Seattle experienced the longest spell of cold weather ever recorded in the City, during all that time there was not a single complaint in the Flemington about heat. The Flemington is always comfortably heated either summer or winter.

There is always an abundance of heat and hot water. The radiation surface is more than ample

to warm the entire building to a temperature of seventy degrees in the coldest weather. On each radiator there is a Pacific Radiator Shield which is the only guaranteed means of protecting walls and drapes from smudge and grime and also adds to the efficiency of the radiator.

The Flemington is ultra modern to the last degree. It has a very complete library for the use of the tenants, an individual locker for each apartment.

Every apartment is equipped with Radio service. Vacuum cleaners are supplied for the tenants' use. Automatic elevator service. All the floors and communicatory walls are sound-proofed with heavy deadening felt. The "Personal Service" of the Flemington adds to the homelike spirit of the building.

Our tenants are our customers and they must be satisfied. Ask any one living in the Flemington in regards to our service. Comfort is a big factor in our life, the Flemington is equipped to provide all the comforts of the most modern home.

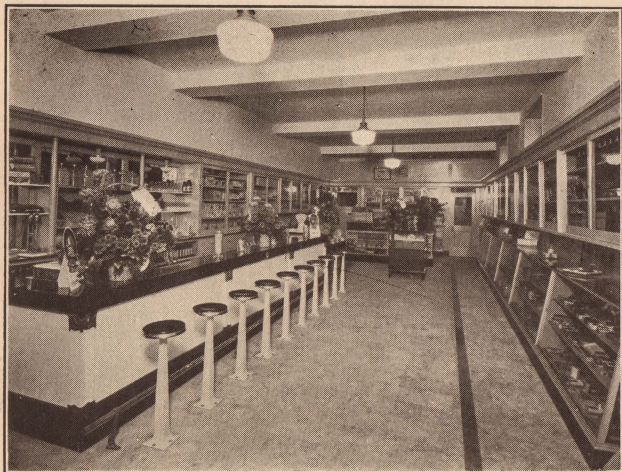
From the standpoint of prominence, comfort, convenience, interior design and appointments, the Flemington is unrivalled. The uniform excellence of all materials and workmanship in the building fully justifies the owner of the Flemington in his claim to having provided Seattle with one of the finest apartment houses on the Pacific Coast today.



**ASHLEY & BELLINGER  
DRUGGISTS**

**Pine and Broadway—Two Stores—Broadway  
and John**

We have made it possible for the people of this community to purchase Drugs, Drug Sundries, Toilet Preparations and Soda Fountain needs at



our stores just as reasonably and with as efficient service as you can at the best down town stores.

Your prescriptions receive very careful attention. They are filled by Registered Pharmacists. Phones East 0373 and Capitol 0700. **We Deliver.**

**HIGHLAND BEAUTY SHOPPE**

Located in The Flemington Apartments

Under Management of  
**Miss Danford**

Expert Operators In All Lines of  
Beauty Culture

Haircutting A Specialty

---

**Mrs. Van Dusen**  
Proprietress

---

Open Fri. & Sat.  
Until 8 P. M.

Tel. Cap. 4171







